



RELEASE NOTE

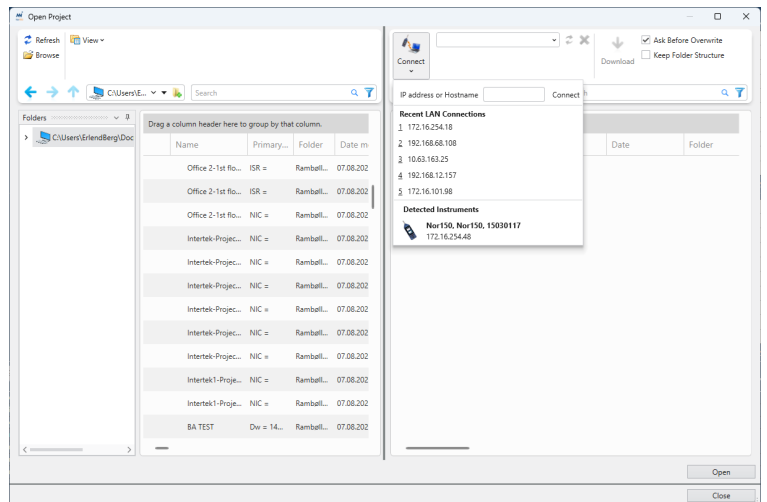
Version 4.2 - Nor850

Software version 4.2 changes major workflow routines, integrate NorConnect functionality inside Nor850, adds new features to the General Analyzer module, as well as several bugfixes and new features

NorConnect Integration

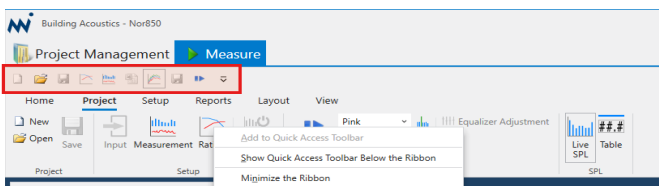
With version 4.2, Nor850 introduces seamless integration with sound level meters, similar to the workflow in NorConnect. This makes it easier to access, manage, and transfer projects, whether the instrument is connected by cable, SD card or wirelessly.

When selecting **Open**, a dual-pane window appears: the left side displays the PC's folder structure, while the right side shows the storage on the sound level meter. From this view, users can establish a connection, browse projects, and benefit from automatic instrument detection.



Quick access toolbar

Right-clicking the different icons in the top menu ribbon allow the user to add that menu to the quick access toolbar. The quick access toolbar can also be adjusted to be either above or below the top ribbon.



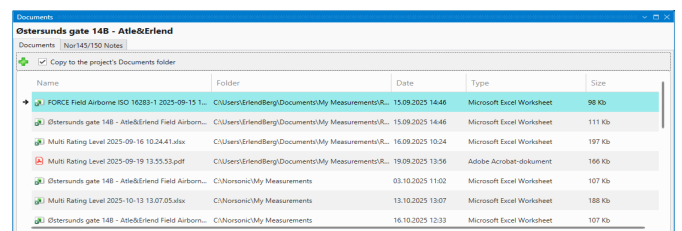
Sensor Information in Excel Reporting

Sensor information, including full calibration history for all sensors used in a measurement, can now be reviewed directly through the Excel report. This functionality is available in the **General Analyzer** module. For all other modules, sensor details remain accessible in the **Channel Info** sheet within the Excel report.

Document Manager

To improve document organization within projects, a new **Document Manager** window has been introduced. This tool allows users to add files from the PC either as relative links or as copies stored directly in the project folder, ensuring full visibility of all associated documents. Any generated reports will also appear automatically in this window. The menu is found in the **Report** menu in the top ribbon.

In addition, notes recorded during measurements on the sound level meter are now accessible here as well.



General Analyzer upgrades

General analyzer has seen several updates in version 4.2. The most important updates include the following.

Tonality Assessment - ISO 20065 and DIN 45681

Bringing features from NorReview, the implementation of **Tonality** can now be found inside the **General Analyzer** application. This feature can be applied to any marker that includes an audio recording. Users may either select the marker itself or highlight a specific portion of the audio, then navigate to **Calculation** --> **Tonality** --> **ISO 20065** or **DIN 45681** to perform the analysis.

The exported excel report also include FFT.

Calibrated Wav File Creation

For marked audio recording areas, the option to create calibrated wav files can be performed. This option is found just beneath Tonality, as described above.

Format Painter



There now exist an option to copy the function selection from one graph window to another. This icon can be found in the selection panel for any graph window, under the green "add" icon.

Function Dependent "Follow Frequency Cursor"

Linked L(t) windows can now have independent functions linked and unlinked. This can be toggled by right-clicking the function of interest.

Default Settings for L(f,t)

Users now can set default settings for the Level(frequency,time) windows.

Frequency Weighting in L(f,t)

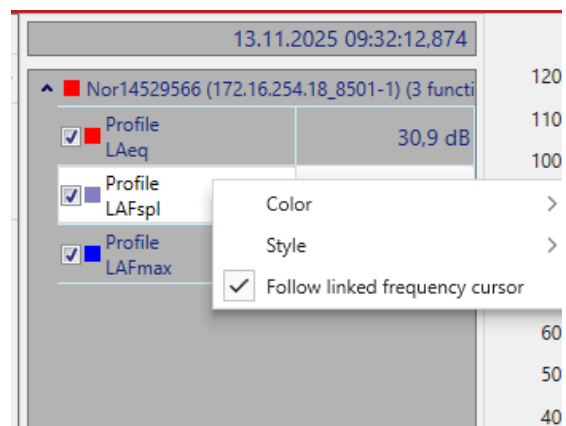
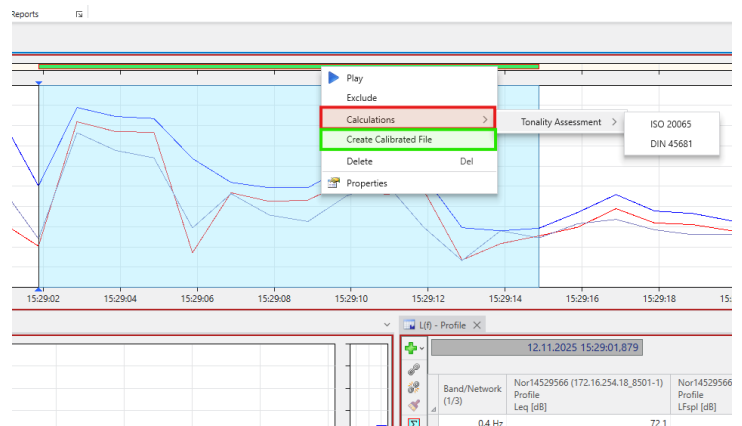
Frequency weighting can be toggled between either A and Z for the Level(frequency,time) windows.

"Zoomed out full" Inside Default Settings

When setting default chart settings, the "Zoomed out full" setting is included.

Ln calculation floor

It is now possible to set the Ln calculation floor.



Project Workflow Modification

A major redesign of the project-collection workflow has arrived

A major redesign of the project-collection workflow has been implemented to simplify use and reduce errors. The previous process was rigid and required a strict sequence of steps, often leading to frustration. The new system removes the need to manually define a collection folder and instead leverages the existing folder hierarchy. Any folder containing measurement projects is now treated as a project collection, with support for additional sub-collections. Changes made directly in File Explorer are automatically reflected in Nor850.

Entire folders can be opened in the Project Management window, and users may combine projects from multiple locations into a single new collection. Nor850 will then create and store copies of the opened projects in the newly generated collection folder.

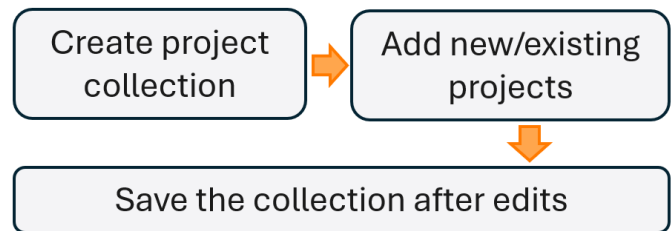
This streamlined approach makes project-collection management more intuitive, flexible, and less prone to user error.

Sorting and Grouping Inside the Project Management

Sorting functionality is now also added to the project management overview window, to be more aligned with the sorting capabilities found in the "Open" window. To use this, simply drag-and-drop a column header to the field above the column header. Multiple columns can be used, resulting in a deeper sorting hierarchy.

! "Reset to factory default" is necessary to activate this feature

Old procedure



New procedure



20 Hz 63 Hz 200 Hz 630 Hz 2 kHz 6.3 kHz 20 kHz												
Overview	Source	Receiving	Background noise	Reverberation	Reference Reverberation	Rating D	Rating R'	Rating DnT	Rating LSmax	Rating LFmax	Rating Leq	Rating LSmax,n
Drag a column header here to group by that column.						Standard						
Name	Primary Rating	Folder		Standard	Type							
Workshop testing Airborne 16032	Dw = 35 dB	Project collection test 1\Project collection test 1\Workshop testing Airborn...		ISO 16283-1	Airboi							
Project 1	LASmax =	Project collection test 1\Project collection test 1\Project 1		ISO 16032	Servic							
Project 2	$\alpha_w =$	Project collection test 1\Project collection test 1\Project 2		ISO 354	Absor							
Project 5	Dw = 46 dB	Project collection test 1\Project collection test 1\Project 5		ISO 16283-1	Airboi							
Project 3	Dw = 18 dB	Project collection test 1\Project collection test 1\Project 3		ISO 10140-2	Airboi							



Building Acoustic Upgrades

The building acoustic module receives a few upgrades. They are as follows.

Individual Primary Rating Setting

In the Overview window, the user can now adjust the primary rating directly in the Primary rating cell. This change will only be applied to the selected projects, meaning multiple projects can be selected simultaneously, and have the primary rating be adjusted for all.

Changes to Standards

The following changes to standards are done:

- **DIN 4109-05:2025:** Fixed loudspeaker angle (45°) correction for facade measurements.
- **DIN 4109-05:2025:** Impact noise for class rooms with $A_0 = 25 \text{ m}^2$.
- **DIN EN ISO 16283:** Subtype "Corner" removed.

Minor Upgrades

Intensity Application

The Intensity application has been renamed to **Sound Intensity**

Appliances Hidden

The Appliances application will remain hidden unless the license registered to the user have it included.

Microsoft 365 Sensitivity Labels

Better support for Excel report generation when Microsoft 365 "Sensitivity labels" is being used for Office documents.

Multiple Cell Delete

In the main result table, it's now possible to select one or more cells and hit the Delete key to clear the cell-value(s).

Bugfixes

- L(t) curve is missing when measuring Level or Background Noise if Reverberation excitation type is set to "SweptSine" and Level excitation type is set to "Noise". This has been fixed.
- Manual control of the microphone boom was not working properly. This has now been fixed.
- STI value was not calculated if "Freefield-Calibration" data was added after the measurements. This is linked to the Room Acoustics module, and is now fixed.
- There was import issued when the measurement had NoiseCompass switched on. This has been fixed.
- Issued related to detecting measurements/projects/collections after using the "Refresh" button has been fixed.
- The incorrectly averaging of **C** and **Ctr** in multi-project has been fixed.